

C o m p a n y P r o f i l e



meghdoot  
LAMINART PVT. LTD.





## Who we are?

Over the years Meghdoot Laminates Pvt. Ltd., has become synonymous with exquisite taste, unparalleled technology, and unmatched quality. Operating with the utmost in business ethics, we are known for our reliability and attention to detail on every deal making your experience with us authentically different. Our Founder and technology expert, Mr. P. K. Patel, and the team at MLPL, lend our expertise and passion for manufacturing to each laminate we produce. As a collective team, the designers create both modern and traditional designs with a unique twist, turning any space into a powerful expression of the client's personality.







## Our Commitment

As a company, we prefer a collaborative approach to product that encourages our clients to develop and hone their own style and taste. We provide value to our clients by discouraging short-lived trends, opting instead for quality and timelessness. The final product ensures a beautiful, comfortable, and most importantly a functional space for our clients. We recognize that the most important element in our product is the people who use them in the end.

The carefully balanced combination of knowledge of the local conditions, the innovative approach to communications, and the experience in production, enhance MLPL's capabilities to effectively manage perceptions of quality and creativity. Adherence to stringent ethical standards, as well as the use of hi-tech production tools make MLPL capable of optimally satisfying the needs of its clients.





## Mission

Unique and creative solutions that meet the clients' expectations not only by realizing the clients' business objectives, but particularly by our strict adherence to the ethical principles of quality.

Continuous search for technology to set high standards of quality.

Creative approaches to the clients' special needs in order to find unique and tailored solutions.

Team work based on the implementation of progressive production disciplines.

Professional quality of services provided by a highly motivated team.

Strong technological background and research and development.



## From desk of the Directors



### **Nimish Patel**

During his career in production, Mr. Nimish Patel established himself as a renowned laminate manufacturer due to his sound technical knowledge. He was instrumental in founding many new manufacturing technique.

Having worked for a number of years as a manufacturer in India, Nimish enjoys excellent know-how and great business ethics.

Thanks to his technical skills in laminate manufacturing, he developed many new finishes and products.

Nimish has done Bachelor of Engineering in Civil.



### **Jenish Patel**

Jenish Patel joined MLPL in 2007. In his role of Business Development Director, he has responsibility for new business development and supporting the growth of accounts. He marketed products to India and other countries like Singapore, USA, UAE, Africa and other European region. He also helped to develop the economy, business and finance of the company.

Jenish has done Bachelor of Engineering in Civil in 2001.

He broadened his knowledge in a number of specialized programs.



# Products

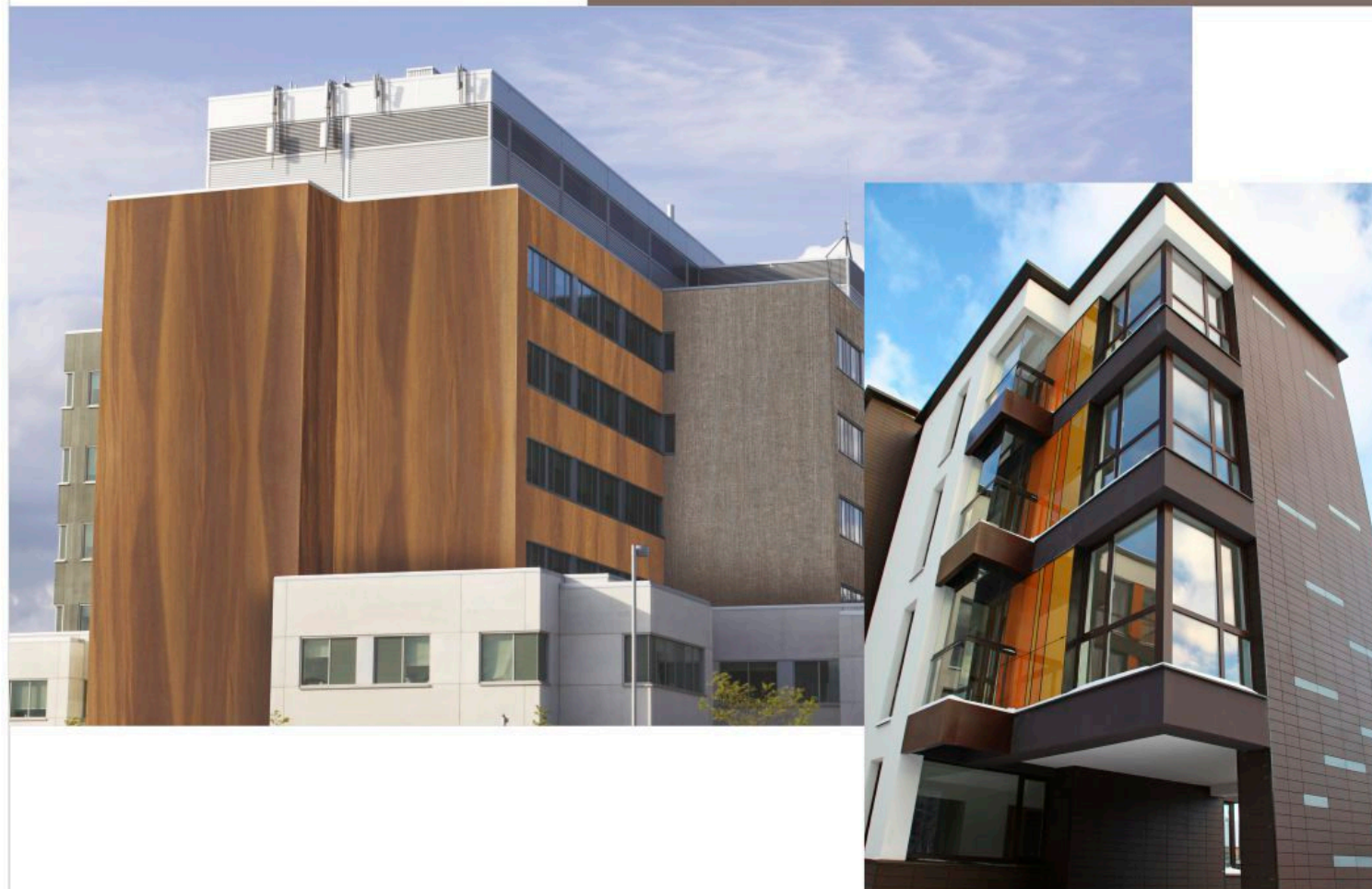
Decorative Grade Laminates (0.5mm to 1.5mm thickness)



Mechanical Grade Laminates



Exterior Grade Laminates



Skateboard Ramp

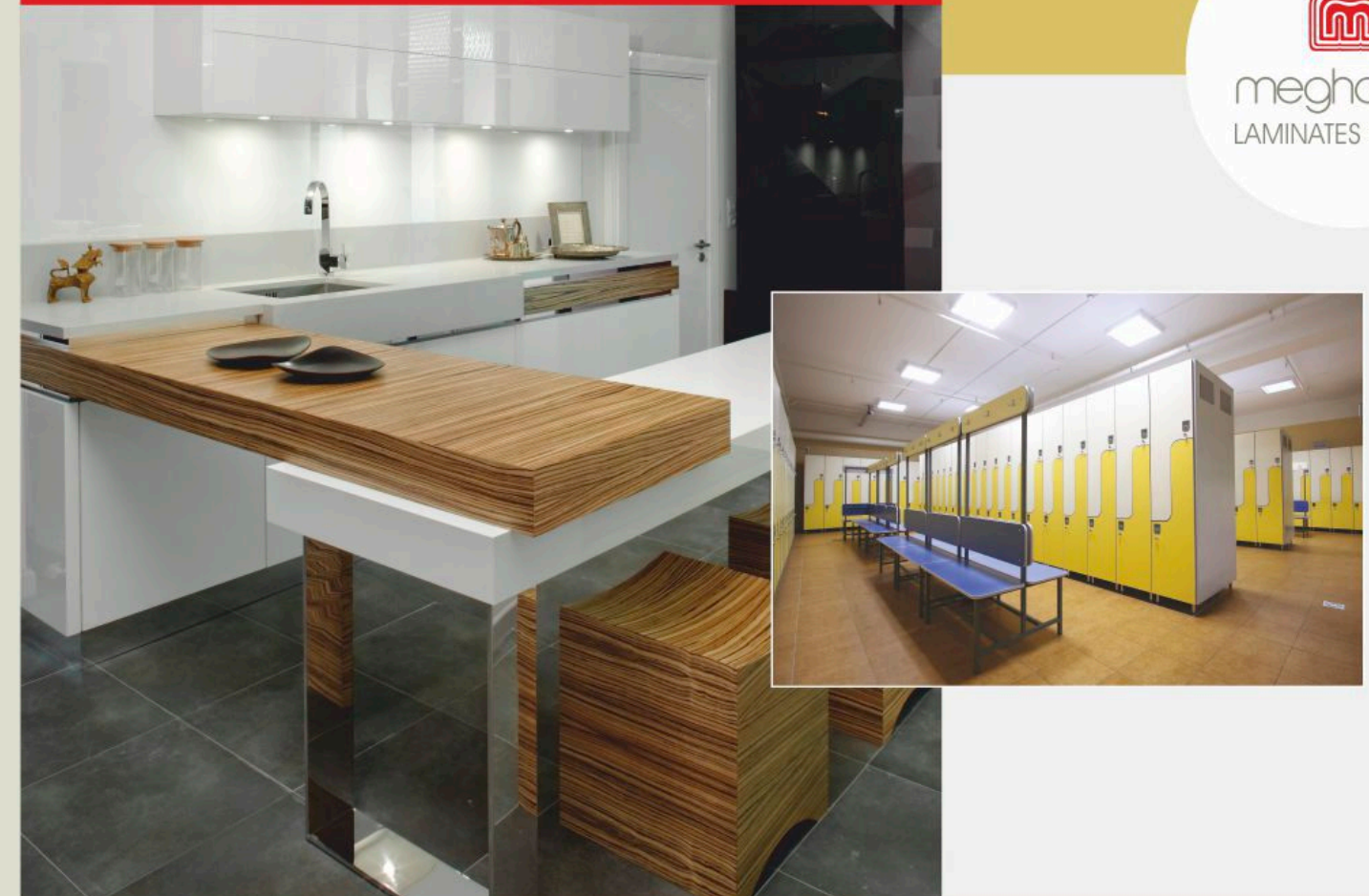




FR Grade Laminates



Tabletop, Kitchen top and Lockers



  
meghdoot  
LAMINATES PVT. LTD.

Cubicles & Panels

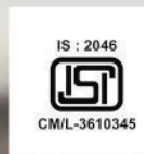


Marker Board and Chalk Board





## Quality & Certifications



### TECHNICAL DATA

NEMA Test	NEMA Standard	Meghdoot 0.8 mm, 1.0 mm Typical Test Value	NEMA Standard	Meghdoot 0.8 mm, 1.0 mm Typical Test Value
Wear Resistance	3.01 Min. Cycles 400	450	Min. Cycles 200	450
Scuff Resistance	3.02 Min. Cycles NE	NE	Min. Cycles NE	NE
Impact Resistance	3.03 Min. Inches 50	70	Min. Inches 20	62
Dimensional Change	3.04			
% M.D. (Max)	0.5	0.21	0.7	0.16
% C.D. (Max)	0.9	0.75	1.2	0.55
Boiling Water Resistance	3.05 Min. Rating NE	NE	Min. Rating NE	NE
High Temp. Resistance	3.06 Min. Rating SL	NE	Min. Rating SL	SL
Radiant Heat Resistance	3.07 Min. Seconds 125	145	Min. Seconds 80	178
Conductive Heat Resistance	3.08 Min. Rating NE	NE	Min. Rating NE	NE
Stain Resistance	3.09			
Reagents 1-23	Min. Rating NE	NE	Min. Rating NE	NE
Reagents 24-29	Min. Rating M	NE	Min. Rating M	SL
Light Resistance	3.10 SL	NE	SL	NE

Rating Systems • NE = No Effect • M = Moderate • SL = Slight Effect

Laminate Standard confirms to:  
ISO 4586 | NEMA LD-3-1995 | IS 2046 : 1995







---

An ISO 9001 : 2008 Company

---

[www.meghdootlaminart.com](http://www.meghdootlaminart.com)



**meghdoot**  
LAMINART PVT. LTD.

Plot 88/89, NIDC Estate,  
Lambha Road, Nr. Narol,  
Ahmedabad 382405. Gujarat (India)  
Phone: +91 79 25710096, 25711534 Fax: +91 79 25710262  
E-mail: [sales@meghdootlaminart.com](mailto:sales@meghdootlaminart.com)  
Website: [www.meghdootlaminart.com](http://www.meghdootlaminart.com)